

Warranty

Amkette EvoFox Banshee 2 Tri-Mode Wireless Gaming Mouse is backed by a 1 year performance warranty against any manufacturing defects in material or workmanship from the date of original purchase. This warranty entitles the purchaser to get the product repaired or replaced at its discretion under the following conditions:

The warranty applies to the original purchaser. Proof of original purchase is required.

The warranty does not cover the damage caused by misuse, abuse or improper storage.

In no event shall Amkette be responsible for any direct, incidental, consequential or other damages of any kind.

Please contact our Technical Support Line and/or send the defective product, postage pre-paid, together with the proof of purchase to our Customer Care Service Center to avail warranty service. Return charges will be paid by us.

Customer Care

Amkette House, C-64/4, Okhla Phase – II, New Delhi – 110020

1800-11-9090 (Toll Free)
(9:30 AM - 6:00 PM)

+91 9312691448
(9:30 AM - 6:00 PM)

techsupport@amkette.in

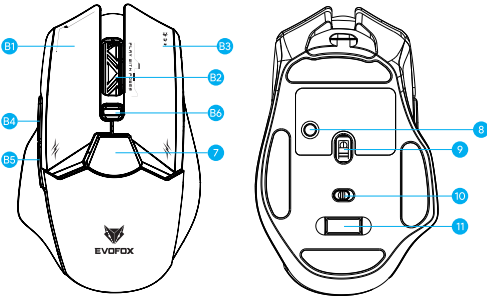
For Hassle Free Service Register Your Product
www.amkette.com/register



BANSHEE 2
TRI-MODE
WIRELESS GAMING MOUSE

QUICK START GUIDE

Know Your Mouse



Programmable Buttons

01 Left Button	02 Middle Button/ Scroll Wheel	03 Right Button
04 Forward Button	05 Backward Button	06 DPI Button
07 LCD Display	08 Device Switch	09 Sensor
10 Mode Switch/Off	11 USB Receptacle	

Installation of the Software

Download the Application by visiting
<https://www.amkette.com/qr/banshee-2-help>

The Software lets you customise all Buttons, create complex macros, and visually control backlighting.

Video Guide For The Software

Scan the QR
and Watch
Quick Tutorial
Videos.



Pre-Programmed DPI Levels

600 - 1600 - 3200 - 6400 - 12000

NOTE: You can customise your mouse DPI levels from 600 to 12,000 using the software for precise control and performance.

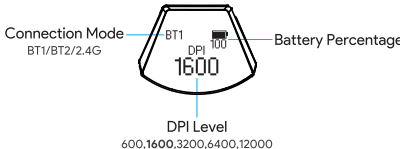
Specifications

Interface	: Wired + 2.4 GHz + Dual Bluetooth
Mouse Sensor	: PAW 3311 (Pixart)
Buttons	: 8 Buttons
Mouse DPI	: 600, 1600 , 3200, 6400, 12000
Polling Rate	: 125 / 250 / 500 / 1000Hz Wired - 1000Hz 2.4G - 500Hz BT - 133Hz
Acceleration	: 35g
IPS (Tracking Speed)	: 300 Inch/sec
FPS	: Self Adaption
Cable System	: Detachable 1.5m Braided Type-C Cable with EMI Ring
System Requirement	: Windows, macOS, Android and iOS
Weight	: 96g
Dimension	: 120 x 76 x 40 mm

What's in the Box



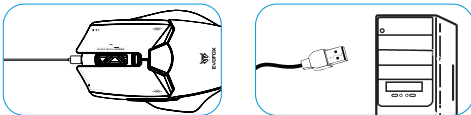
LCD Display Overview



Connection Guide

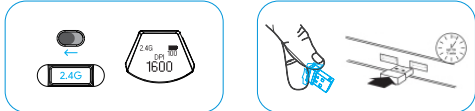
Before proceeding with the connection process, please ensure that the mouse is charged using the provided Type-C cable.

Connecting via Cable



NOTE: If the mouse is connected via cable, it will automatically switch to wired mode, and other modes will be disabled.

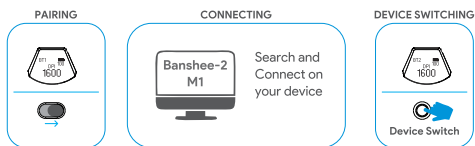
Connecting via USB 2.4GHz



NOTE: Long press the Back Button to enter the pairing mode.

Backup Pairing Method: hold the **Left Click + Right Click + Scroll Wheel** together for 3-5 seconds.

Connecting via Bluetooth



Follow the same process for Pairing and Connecting in BT2 by pressing Switch again.

Note: The mouse defaults to 1000Hz in Wired mode for maximum responsiveness, and 500Hz in 2.4G to save power. This setting is adjustable via EvoFox software (for 2.4G and Wired modes).

6 Power Saving Modes

High-performance gaming mice consume a lot of battery. Turning off the RGB light can provide you with a few extra hours of usage.

In Bluetooth mode, you can check the battery percentage from the LCD display.

Auto Standby Mode: Mouse enters standby after 1 minute of inactivity and instantly wakes with any movement.

Logo Lighting Timeout: The RGB logo backlight turns off after 1 minute of idle time and turns back on when the mouse is moved.

LCD Display Timeout: The LCD screen powers off after 1 minute of no activity and resumes display on movement.

Smart Sensor Wake-up: During standby, the mouse remains alert to movement and resumes normal operation without delay.

Deep Sleep Mode: After 10 minutes of inactivity, the mouse enters deep sleep mode. Pressing any button wakes it.

Efficient Battery Management: All modes are optimized to conserve power and extend battery life up to 45 hours under continuous.

Polling Rate Defaulted to 500Hz: Optimized to balance performance and power efficiency for 2.4GHz mode.